

Handling & Operation Manual



Fresnel Lenses

No.:

Handling Manual
Fresnel_5_English

Revision:

05

SUPRAX® 8488 Borosilicate Glass

Date:

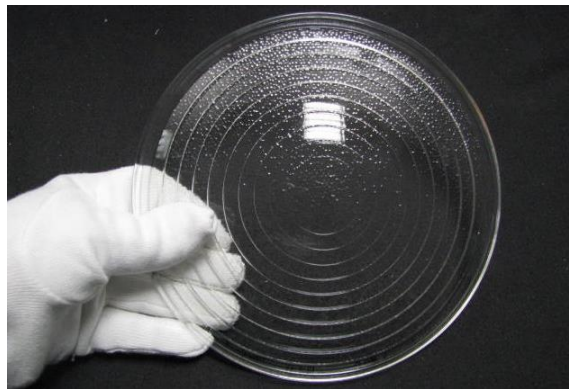
Feb. 29, 2024

Page:

1 / 6

I. Handling & Inspection

1. Handle with Care



2. Surface Protection

Always place the lens with the "Fresnel side" on soft pads like rubber or plastic.

Soft surface



Glass

Metal

3. Examine Before Use

- Inspect lenses for mechanical damage before installation and replace if needed.
- For queries, reach out to your Fresnel lens supplier.

Handling & Operation Manual



Fresnel Lenses

No.:

Handling Manual
Fresnel_5_English

Revision:

05

SUPRAX® 8488 Borosilicate Glass

Date:

Feb. 29, 2024

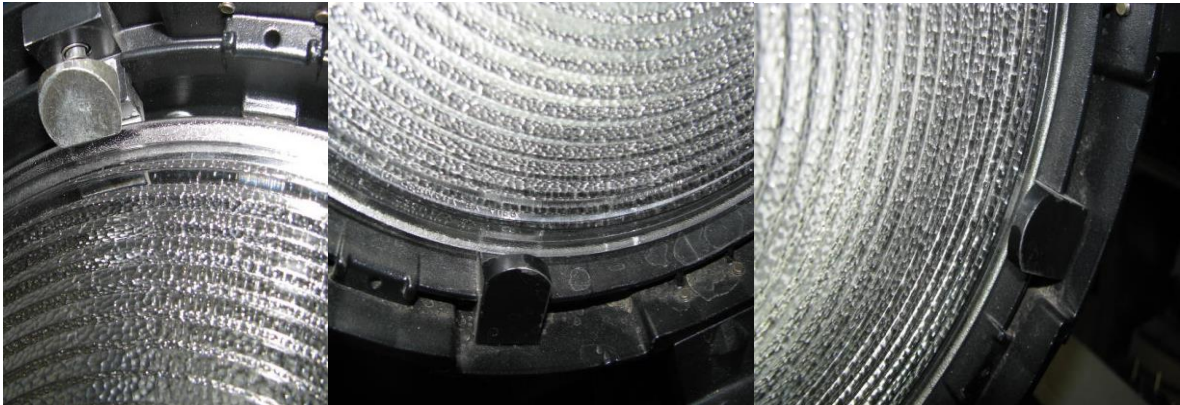
Page:

2 / 6

II. Installation

1. Safeguard During Installation

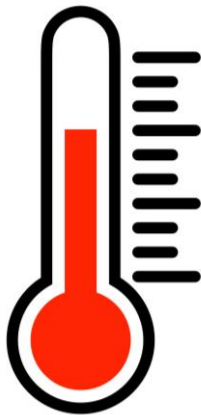
Use caution with mounting clips to prevent lens damage.



2. Thermal Precautions

Avoid direct contact of the lens flange with metal clips; use PTFE insulation (min. 2 mm thick).

3. Temperature Guidelines



- Non-tempered lenses: Max. 450°C (842°F)
- Tempered lenses: Max. 330°C (626°F)

Handling & Operation Manual



Fresnel Lenses

No.:

Handling Manual
Fresnel_5_English

Revision:

05

SUPRAX® 8488 Borosilicate Glass

Date:

Feb. 29, 2024

Page:

3 / 6

III. Maintenance

1. Cool Before Cleaning

Allow lenses to reach room temperature before cleaning.

2. Cleaning Instructions

Use only non-abrasive cleaners and water.



Handling & Operation Manual



Fresnel Lenses

No.:

Handling Manual
Fresnel_5_English

Revision:

05

SUPRAX® 8488 Borosilicate Glass

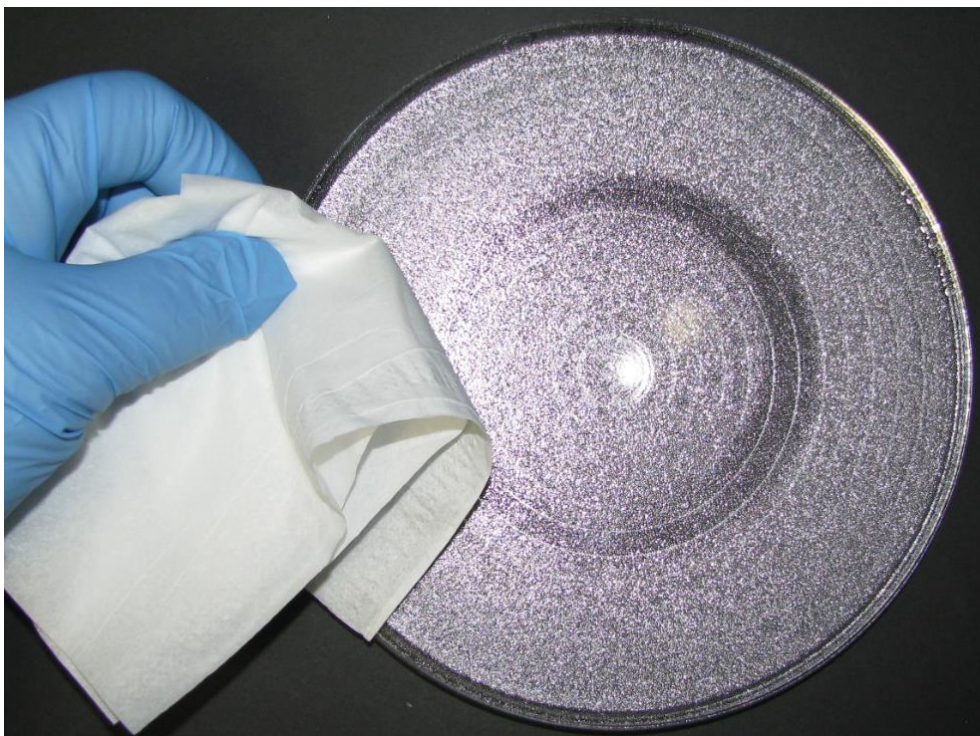
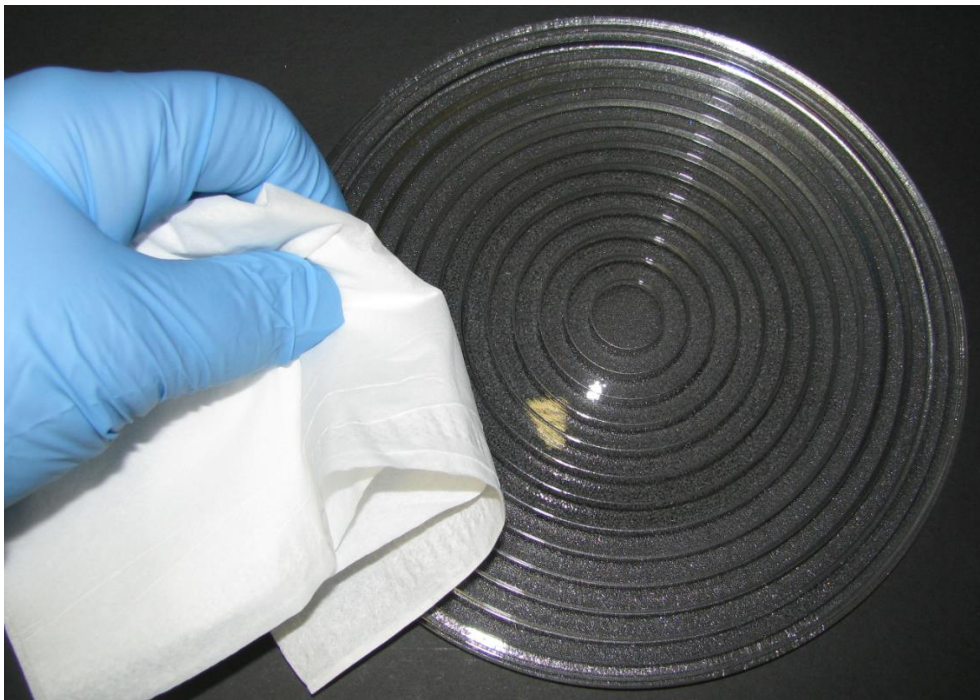
Date:

Feb. 29, 2024

Page:

4 / 6

Ensure the Fresnel side is on a soft surface; clean gently.



Handling & Operation Manual



Fresnel Lenses

No.:

Handling Manual
Fresnel_5_English

Revision:

05

SUPRAX® 8488 Borosilicate Glass

Date:

Feb. 29, 2024

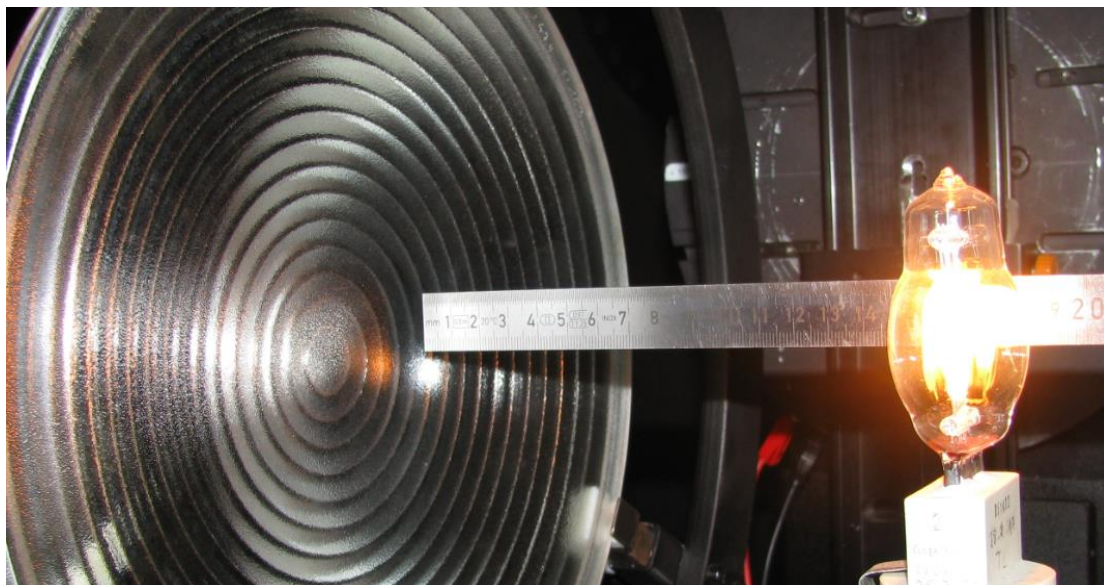
Page:

5 / 6

IV. Usage

1. Light Source Distance

Adhere to the specified minimum distance from the light source to prevent overheating.



2. Recommended Lamp Types

Use lamp types suggested by the lighting fixture manufacturer.

3. Consider Mechanical Expansion

Consider the lens's maximum mechanical expansion ($\alpha_{20/300^{\circ}\text{C}} = 4,1 \times 10^{-6}\text{K}^{-1}$) during operation and installation.

Handling & Operation Manual



Fresnel Lenses

No.:

Handling Manual
Fresnel_5_English

Revision:

05

SUPRAX® 8488 Borosilicate Glass

Date:

Feb. 29, 2024

Page:

6 / 6

4. Special Instruction for Ø 625mm Lenses

Use only discharge lamps for lenses with a diameter of Ø 625mm from a lamp output of 18 kW upwards.



&



V. Transportation

Shipping Precautions

Transport lenses and lighting fixtures securely to prevent any mechanical damage.



Note: Failure to comply with any of the above guidelines may void the warranty. Claims due to improper handling will be rejected. Detailed instructions can always be found in the lens specifications provided by the manufacturer.